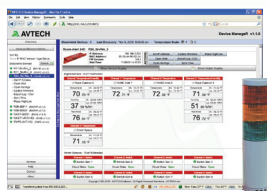
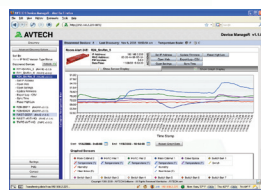


Protect Your IT Facility...

Don't Wait Until It's Too Late!



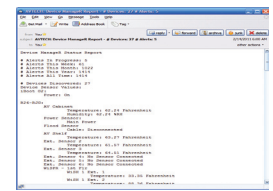
Monitor, Alert...



Log, Graph...



View, Respond...



Report, Plan!

Install Room Alert & TemPageR...

The Most Popular Physical Environment Monitors In The World!

- Digital Temperature
- Digital Outdoor Temperature
- Digital Fluid Temperature
- Digital Humidity
- Main / UPS Power
- Flood / Water
- Heat Index (Feels Like)
- Smoke / Fire
- Sound, Light
- Air Flow
- Motion, Room Entry
- Panic Buttons, Security
- Wireless Sensor Hubs
- Light Towers, Relay Switches
- Network Cameras
- Switch Sensors
- Dry Contacts
- Low Voltage Sensors

The Most Advanced, Easy-To-Use, Reliable & Affordable Monitors Available.

IN THIS CATALOG:

Sample Room Alert 32W Layout.....	Front Cover
About AVTECH.....	2
Monitor Temperature Extremes With TemPageR.....	3
Device ManageR Overview.....	4
Plugins Bundles For Device ManageR.....	5 - 6
Room Alert 32W Overview.....	7
Room Alert 32E Overview.....	8
Room Alert 24E Overview.....	8
Signal Tower w/Audio Rack Overview.....	8
Room Alert 11ER Overview.....	9
Room Alert 11E Overview.....	9
Signal Tower Combo Rack Overview.....	9
Room Alert 4ER Overview.....	10
Room Alert 4E Overview.....	10
TemPageR 3ER Overview.....	11
TemPageR 3E Overview.....	11
Sensors & Wireless Hubs.....	12 - 14
How To Purchase AVTECH Products.....	15
Maintenance Support & Update Service (MSUS).....	15
AVTECH Contact Information, Trademarks, Privacy Policy & More.....	15
What Will You Do When Disaster Strikes?.....	Back Cover

About AVTECH

AVTECH Software (AVTECH), a private corporation founded in 1988, is a computer hardware/software developer. Our **Room Alert & TemPageR** products monitor computer rooms, data centers, and other facilities for conditions like temperature, humidity, power, flood/water, smoke/fire, air flow, room entry, motion, cameras & more. Alerting, logging and graphing are standard for all models. Automatic corrective actions resolve issues for a lights out response, allowing 'Disaster Prevention' instead of 'Disaster Recovery'. **Device ManageR** is AVTECH's solution for the discovery, management, logging, graphing, alerting and more for AVTECH's 'IT & Facilities Environment Monitoring' hardware. Device ManageR runs as a Windows Service and will automatically discover units across the network, log and graph important sensor data, alert users when environmental thresholds are passed, and much more.

AVTECH has over 100,000 end users located around the globe, including organizations in every industry and on every continent. AVTECH products are heavily used by the Fortune 1000, Pentagon, United Nations, U.S. Government, U.S. Military, educational institutions, businesses of all types and sizes, and many others.

AVTECH's products are available worldwide from professional IT & facilities resellers, online at EnvironmentMonitor.com or directly from AVTECH. To learn more about any AVTECH product, visit us online at AVTECH.com or call 888.220.6700 / 401.628.1600.



Monitor Temperature From Anywhere With AVTECH's

TemPageR™

The World's Most Popular Product For Monitoring Temperature
In Computer Rooms, Data Centers And Other Facilities!

Standard - \$195 • Wall Mount - \$205 • Rack Mount - \$225

Monitor Temperature Extremes With TemPageR™

No one knows when or how disaster will strike, we just know the potential is always there. So preparation is crucial to minimizing the impact of temperature extremes on computers, networks, users & business.

When a temperature related disaster occurs, there are significant costs in areas that go far beyond the simple replacement of damaged hardware. This is because what happens in the data center effects the entire organization. If disaster strikes your facility, how will it impact business? Who will get the blame? Could it have been prevented? What will it cost?

AVTECH's TemPageR monitor is a powerful solution for real-time temperature monitoring in a computer room, data center or other facility. TemPageR arrives assembled with easy-to-install hardware, cables, sensors, easy-to-use logging & alerting software, printed documentation, unlimited technical support and a '30-Day Satisfaction Guarantee'. Users can typically install TemPageR in less than 10 minutes.

TemPageR products monitor critical environments such as phone or wiring closets, critical rack cabinets, large computer rooms or data centers, multi-building facilities and more. Staff can be alerted by advanced methods and take automatic corrective action. Start protecting your facility now... *Don't Wait Until It's Too Late!*

BEST SELLER



Rack Mount **\$225**

Standard **\$195**

TemPageR Includes:

- Built-in Digital Temperature Sensor
- External Digital Temperature Sensor
- Monitor Range: -67° - 257° F (-55° - 125° C)
- Accuracy Range: +/- 0.125%
- 5V Power Adapter, Factory Reset Button
- Graphing, Logging & Alerting Software
- AVTECH's 20+ Years Of Experience

Call Or Visit Us Online Today

 **AVTECH**

888.220.6700 • 401.628.1600

AVTECH.com

Contact Your Favorite Reseller To Order!

Protect Your IT Facility... *Don't Wait Until It's Too Late!*

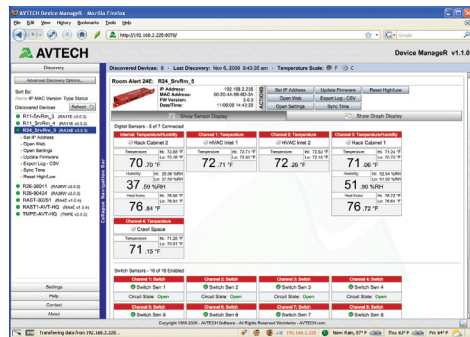
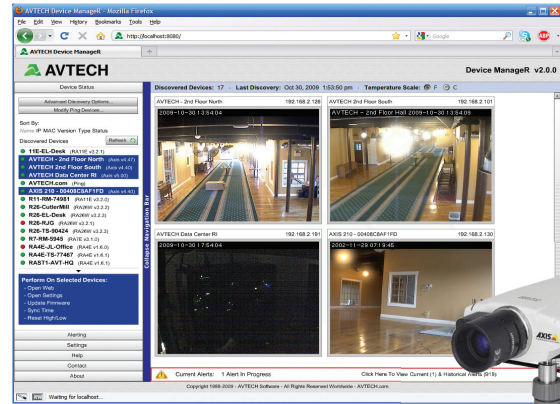
* AVTECH is the worldwide leader of IT & facilities physical environment monitoring products. Purchase through your favorite reseller or at EnvironmentMonitor.com.

Device Manager™

Multi-Unit Interface For AVTECH Monitors & Axis Cameras... Network-Wide!

Advanced Software For Discovery, Management, Logging, Graphing, Alerting & More

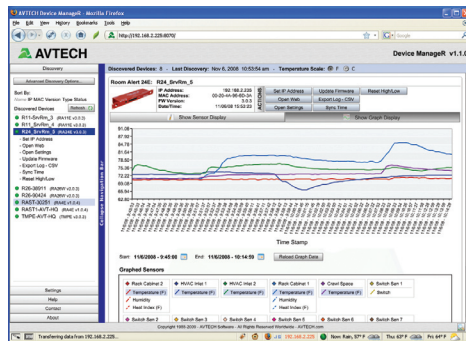
Knowing immediately when an issue or event occurs in your data center or other important facility could save your organization from disaster. **Device Manager™** is an all-in-one solution for the discovery, management, logging, graphing, alerting and more of AVTECH's 'IT & Facilities Environment Monitoring' hardware. Complete with its unique range of features, Device Manager runs as a Windows Service and is ideal for managing single units or a multi-unit deployment via its web interface. Device Manager automatically discovers units across the network and allows users to immediately be informed when environmental thresholds are passed (i.e. temperature too hot, power loss, humidity too high, water leak, etc.). Alerts are sent via email and more to mobile devices such as computers, phones, *BlackBerrys™*, *iPhones™*, web pages, and more.



Being able to view real-time sensor data in a single screen is important to save time and expenses. Device Manager's web browser interface allows users to view and manage any or all units through a single web interface,

accessible from anywhere network-wide. Through a single IP address, users can view, graph and log sensor data in real-time, or over a specified date range, for one or multiple units. Graphs displayed are automatically refreshed allowing users to see exactly what is happening in real-time. All sensor data is stored in an SQL database limited only by disk space. This is an invaluable tool when it comes to comparing data, reporting, or forecasting future needs for planning. Sensor data can be easily exported to CSV, Excel, or for use with an external database.

Device Manager also has the ability to discover any Axis™ network camera and acts as a single interface for viewing camera images for multiple cameras distributed across the network. Cameras can be set up to sense motion or audio and then alert staff through Device Manager when sensors are triggered. Users can view one camera at a time or call up a summary to view multiple cameras network-wide through a single web page. Users can store images for future reference and forward links to camera images within alerts. Contact your favorite Reseller or an AVTECH Product Specialist to learn more.



- Web Browser Interface For Remote Monitoring
- Auto Discovery Of AVTECH Monitors & Axis Cameras
- Setup & Configuration Of AVTECH Monitors
- View Sensor Data For Multiple Units Simultaneously
- Log, Graph, Report & Export Historical Sensor Data
- View Multiple Axis Camera Displays Simultaneously
- Send Alerts When Sensor Thresholds Are Passed
- Monitor & Manage Unlimited Units Network-Wide Through A Single IP Address Or Web Page
- Network-Wide Discovery Using UDP Broadcast
- Automatic Discovery Even Across Different Subnets
- Unlimited Data Logging To An Embedded SQL Database With No Limits Other Than Disk Space Capacity
- Sensor & Data Graphing On Screen In Seconds... Allows Comparison Of Sensors Side By Side
- Ping Servers And Devices Across Your Network
- Runs As A Windows Service For Security, Allows Multi-User & Multi-Level Access, Using A Web Browser
- Auto Discovery Of Out-Of-Date Firmware
- Easy Firmware Upgrades For One Or Multiple Monitors Simultaneously Via Download, Across The Network
- Copy Configuration Settings To One Or Multiple Monitors Simultaneously, Across The Network
- Graphic Display Of Hardware In Settings Screen
- Supports Schedules, Alerts & Corrective Actions
- Advanced Report Generator Available
- Bundled FREE With Room Alert & TemPageR

FREE
Software
License

Plugin Bundles For Device ManageR™

Easy-To-Use Plugins Enhance The Capabilities Of AVTECH's Device ManageR

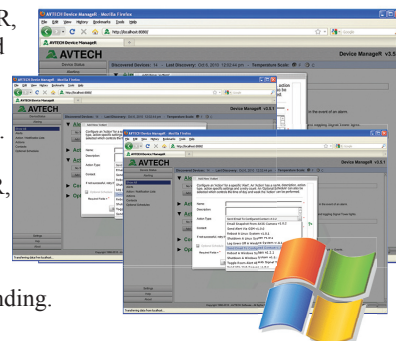
Plugin - Windows Bundle (Shutdown, Reboot, Log Off & Script)



ADM-WINB-PAS



- **Shutdown Windows Systems Remotely Across The Network.** When used with Device ManageR, this plugin will perform a forced power-down of the target system. Use it to shutdown an unlimited number of Windows systems across the network... individually, in groups, simultaneously, sequentially or according to a defined schedule. Shutdown systems without any user interaction both automatically and immediately to save equipment from damage due to environment extremes.
- **Reboot Windows Systems Remotely Across The Network.** When used with Device ManageR, this plugin will perform a forced reboot of the target system. Use it to reboot an unlimited number of Windows systems across the network... individually, in groups, simultaneously, sequentially or according to a defined schedule. Monitoring a system or device via a Ping Object? Use the 'Reboot Action' to restore the service being monitored if/when it stops responding.
- **Log Off Windows Systems Remotely Across The Network.** When used with Device ManageR, this plugin will perform a forced log off of the target system. Use it to log off an unlimited number of Windows systems across the network... individually, in groups, simultaneously, sequentially or according to a defined schedule. Issue log off responses for security, to manage power consumption or more from anywhere in the world by using Device ManageR's easy-to-use web browser interface.
- **Execute Windows Commands, Batch Files Or VBScripts.** When used with Device ManageR, this plugin will allow users to execute Windows commands, batch files or VBScripts when alerts are detected. Each instance of the Windows Scripting action will be able to perform one method at a time, however there are no limits on the number of instances that can be created.



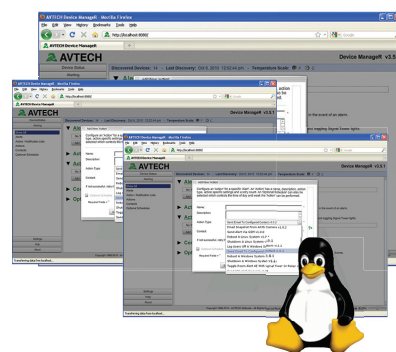
Plugin - Unix/Linux Bundle (Shutdown & Reboot)



ADM-UNLB-PAS



- **Shutdown Unix/Linux Systems Remotely Across The Network.** When used with Device ManageR, this plugin will perform a forced power-down of the target system. Use it to shutdown an unlimited number of Unix/Linux systems across the network... individually, in groups, simultaneously, sequentially or according to a defined schedule. Shutdown systems without any user interaction both automatically and immediately to save equipment from damage due to environment extremes.
- **Reboot Unix/Linux Systems Remotely Across The Network.** When used with Device ManageR, this plugin will perform a forced reboot of the target system. Use it to reboot an unlimited number of Unix/Linux systems across the network... individually, in groups, simultaneously, sequentially or according to a defined schedule. Monitoring a system or device via a Ping Object? Use the 'Reboot Action' to restore the service being monitored if/when it stops responding.



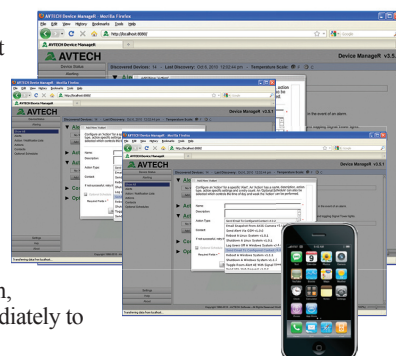
Plugin - Dial Out Bundle (GSM, Text & Voice*)



ADM-DOB-PAS



- **Send Text Messages To Mobile Devices Via A GSM Modem Or Phone.** This plugin action will use a GSM modem or phone connected to the Device ManageR host system to send a text message to configured contacts when issues or events occur across the network. Use it to send text messages to an unlimited number of contacts... individually, in groups, simultaneously, sequentially or according to a defined schedule. Send notifications both automatically and immediately to save equipment from environment extremes.
- **Send Text Messages To Mobile Devices Through A Modem Via TAP Service, Or Dial A Phone Directly To Play Dial Tones.** This plugin can be used to call/text an unlimited number of phones... individually, in groups, simultaneously, sequentially or according to a defined schedule. Receiving phones can set a customized description or name for the dial out line for easy installation, such as 'Device ManageR' or 'Data Center Alert'. Send notifications both automatically and immediately to save equipment from environment extremes.
- **Dial A Phone Directly To Play Voice* Messages.** This plugin can be used to dial a phone directly and play voice messages to an unlimited number of phones... individually, in groups, simultaneously, sequentially or according to a defined schedule. Send notifications both automatically and immediately to save equipment from environment extremes. * Available As A Free Upgrade Later In 2011!



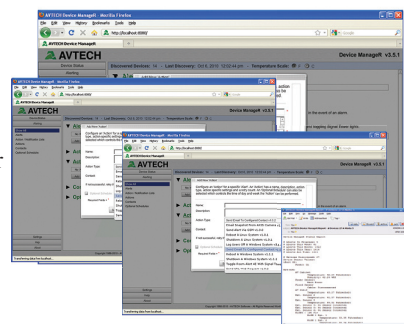
Plugin Bundles For Device *ManageR*™

Easy-To-Use Plugins Enhance The Capabilities Of AVTECH's Device Manager

Plugin - Report Generator



- **Automatically Generate And Email Scheduled Status Reports.** When used with Device Manager, this plugin allows users to schedule and send emails to configured contacts with status updates and advanced statistics on discovered devices (Room Alert & TemPageR), alerts detected by Device Manager and more. View and print status and/or statistics for selected environmental sensors within computer rooms, data centers and other facilities. Keywords are available that allow users to insert real-time values for the number of alerts in progress, number of alerts in a designated time period, number of devices discovered, current sensor readings and much more. An unlimited number of reports can be created, allowing users the flexibility to create different reports for different contacts, or to generate reports according to different schedules (i.e. periodic, daily, weekly or monthly report) or facilities.



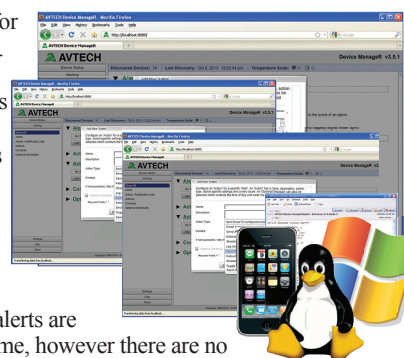
Plugin - Super Bundle (Windows, Unix/Linux, Dial Out, Report)



ADM-SUPB-PAS



- **Plugin - Report Generator.** With this plugin, users can automatically generate and email reports for some or all environmental conditions within their computer rooms, data centers and other facilities. Keywords are available that allow users to insert values for the number of alerts in progress, number of alerts in a designated time period, number of devices discovered, current sensor readings and much more. An unlimited number of reports can be created, allowing users the flexibility to create different reports for different contacts, or to generate reports according to different schedules (i.e. periodic, daily, weekly or monthly report).
- **Plugin - Windows Bundle (Shutdown, Reboot, Log Off & Script).** When used with Device Manager this plugin package allows users to shutdown, log off or reboot Windows systems remotely across the network. The 'Windows Bundle' also offers the functionality to perform Windows Scripting such as the execution of Windows commands, batch files or VBScripts, when alerts are detected. Each instance of the Windows Scripting action will be able to perform one method at a time, however there are no limits on the number of instances that can be created. Perform these actions for an unlimited number of Windows systems across the network... individually, in groups, simultaneously, sequentially or according to a defined schedule.
- **Plugin - Unix/Linux Bundle (Shutdown & Reboot).** When used with Device Manager this plugin package will allow users to shutdown and/or reboot Unix/Linux systems remotely across the network. When an alert is detected, this action will perform a forced power-down or reboot of the target system by connecting directly to the system via Telnet. Shutdown or reboot an unlimited number of Unix/Linux systems across the network... individually, in groups, simultaneously, sequentially or according to a defined schedule.
- **Plugin - Dial Out Bundle (GSM, Text & Voice*).** When used with Device Manager this plugin package will allow users to send out text messages via a GSM modem, use a TAP service to send out text messages, dial a phone directly and play dial tones and/or to dial a phone directly and play voice messages* remotely across the network. Send messages to an unlimited number of contacts... individually, in groups, simultaneously, sequentially or according to a defined schedule. * Available As A Free Upgrade Later In 2011!



Plugins For AVTECH's Device Manager Application Enhance The Capabilities, Ease-Of-Use And Overall User Experience While Working With Room Alert And TemPager Monitors. AVTECH Will Release Additional Plugins On A Regular Basis To Monitor Additional Third Party Products.

Room Alert 32W (RA32W)

Available May 2011



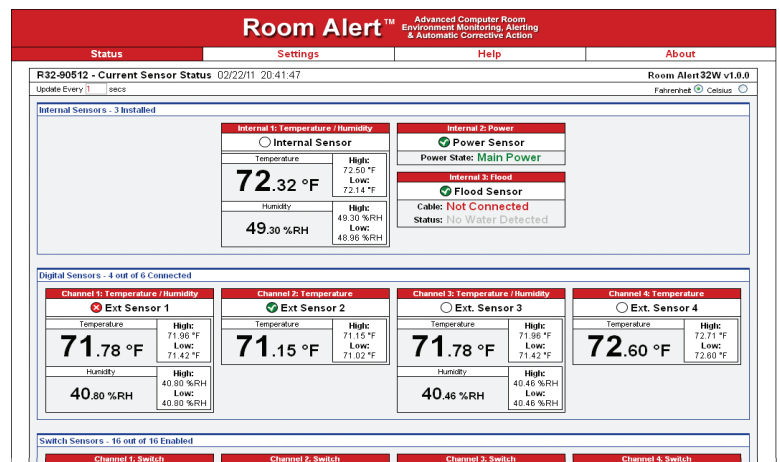
- Can accommodate approximately 100 sensors with Digital Temperature, Digital Humidity & Power built-in.
- Includes a built-in Uninterruptible Power Supply (UPS), Powered Wireless Sensor Hub (P-WiSH), external Digital Temperature Sensor, external Room Entry Sensor, Factory Reset Button, External Relay Output Ports, Light Tower Connection Ports, 0-5V Analog Sensor Input Ports, PoE & much more.
- Use Room Alert 32W's built-in web server, bundled Device Manager software, or any SNMP application to monitor unlimited units across your network.
- Room Alert 32W allows real-time monitoring, advanced alerting by email/email-to-SMS/SNMP & more, Fahrenheit/Celsius, high/low watermarks, wireless sensor hub monitoring (15 max), logging/graphing software, shutdown, reboot & log off capabilities & much more.
- Use Room Alert 32W with or without a host system. That's right... *No PC Required!*



RA32W-WS1-RAS

INCLUDES: Room Alert 32W Rack Unit (1U 19"), built-in Digital Temperature Sensor, built-in Digital Humidity Sensor, built-in Main Power Sensor, external Digital Temperature Sensor, external Room Entry Sensor, 8 external Digital Sensor Ports (RJ-11), 16 Switch Sensor Channels, Power On/Off Button, Factory Reset Button, 15 Wireless Sensor Hub capacity, Power Over Ethernet (PoE), LED Sensor Status & Wireless Strength indicators, PoE, WLAN, GSM Activity indicators, built-in Uninterruptible Power Supply (UPS), Wireless Sensor Hub (Powered), Ethernet Connection (RJ-45), 2 External Light Tower Connection Ports, 2 External Relay Output Ports (0.3A@125VAC / 1A@24VDC), 2 0-5V Analog Sensor Input Ports, 10' Ethernet cable, 5V Power Adapter (110/240V, RoHS), built-in web server, SNMP Trap & Query enabled, bundled Device Manager software license, Windows Plugin Bundle (Unix/Linux available if preferred), Installation & resource media, printed Room Alert 32W User's Guide & Reference Manual, 12 months of Maintenance Support & Update Service (MSUS), '30-Day Satisfaction Guarantee' and special offers on other products. Additional sensors & optional software plugin packages are available.

Room Alert 32W is AVTECH's most advanced hardware solution for "Computer Room Environment Monitoring, Alerting & Automatic Corrective Action with a built-in UPS & Wireless Sensor Hub Monitoring". It is designed specifically to assist with monitoring computer room temperature, humidity, power and much more in multiple locations while *utilizing wireless technology to avoid running cables*. Room Alert 32W's Wireless Sensor Hub (WiSH) and Wireless Sensor Hub & Powered Relay (WiSPR) communicate via a secure, private protocol that is ZigBee compatible, allowing users the ability to *monitor large numbers of sensors both indoors and out*. Room Alert 32W allows direct connection of 10 digital sensors and 16 switch sensors, 15 WiSH or WiSPR units and connection of external Relay's, Light Towers and/or other third party sensors. **Room Alert 32W is the most advanced product of its type worldwide.**



Sample Room Alert 32W web browser interface. **This model allows use of approximately 100 total sensors, with 60 via wireless connection.** Advanced monitoring features are available by using AVTECH's Device Manager software, including FREE. Customize your use with 'Plugins' for special functions.

Wireless Sensor Hub & Relay Options...

Wireless Sensor Hub (Powered)



RA26W-PWSH-HUB

- Internal Digital Temperature Sensor.
- Temperature range: -67 – 257° F, -55 – 125° C.
- 2 digital ports, 1 switch sensor channel.
- Max wireless distance from Room Alert unit or WiSPR is **250'** in ideal conditions.
- Max 15 WiSH / WiSPR per Room Alert unit.
- Compatible with Room Alert 32W & 26W only.

INCLUDES: Internal Digital Temperature Sensor, 2 Digital Sensor Ports, 1 Switch Sensor Port, 5V power adapter & installation note. Max range approximately 250'.

Wireless Sensor Hub & Power Relay



RA26W-WSPR-HUB

- Internal Digital Temperature Sensor.
- Temperature range: -67 – 257° F, -55 – 125° C.
- 2 digital ports, 1 switch sensor channel.
- Max wireless distance from Room Alert unit or WiSPR is **350'** in ideal conditions.
- Max 15 WiSH / WiSPR per Room Alert unit.
- Compatible with Room Alert 32W & 26W only.

INCLUDES: Powered relay technology, internal Digital Temperature Sensor, 2 Digital Sensor Ports, 1 Switch Sensor Port, 5V power adapter & installation note. Max range approximately 350'.

Room Alert 32E (RA32E)

Available May 2011



- Built-in Digital Temperature Sensor, Digital Humidity Sensor, Power Sensor & Factory Reset Button.
- Includes a built-in Uninterruptible Power Supply (UPS), external Digital Temperature Sensor, external Room Entry Sensor, external Relay Output Ports, 2 Relay or Light Tower Connection Ports, 2 0-5V Analog Sensor Input Ports, PoE, Windows Plugin Bundle & much more.
- Use Room Alert 32E's built-in web server, bundled *Device Manager* software, or any SNMP application to monitor unlimited units across your network.
- Room Alert 32E allows real-time monitoring, advanced alerting by email/email-to-SMS/SNMP & more, Fahrenheit/Celsius, high/low watermarks, logging/graphing software, shutdown, reboot & log off capabilities & much more.
- Use Room Alert 32E with or without a host system. That's right... *No PC Required!*



RA32E-TH1-RAS

INCLUDES: Room Alert 32E Rack Unit (1U 19"), built-in Digital Temperature Sensor, built-in Digital Humidity Sensor, built-in Main Power Sensor, external Digital Temperature Sensor, external Room Entry Sensor, 8 external Digital Sensor Ports (RJ-11), 16 Switch Sensor Channels, Power On/Off Button, Factory Reset Button, Power Over Ethernet (PoE), LED Sensor Status indicators, PoE, WLAN, GSM Activity indicators, built-in Uninterruptible Power Supply (UPS), Ethernet Connection (RJ-45), 2 External Light Tower Connection Ports, 2 External Relay Output Ports (0.3A@125VAC / 1A@24VDC), 2 0-5V Analog Sensor Input Ports, 10' Ethernet cable, 5V Power Adapter (110/240V, RoHS), built-in web server, SNMP Trap & Query enabled, bundled *Device Manager* software license, Windows Plugin Bundle (Unix/Linux available if preferred), Installation & resource media, printed *Room Alert 32E User's Guide & Reference Manual*, 12 months of Maintenance Support & Update Service (MSUS), '30-Day Satisfaction Guarantee' and special offers on other products. Additional sensors & optional software plugin packages are available.

Room Alert 24E (RA24E)



- Built-in Digital Temperature Sensor, Digital Humidity Sensor & Factory Reset Button.
- Includes external Main Power, Temperature & Room Entry Sensors.
- Allows 6 external Digital Temperature, Digital Temperature/Humidity or Digital Power Sensors & 16 Switch Sensors.
- Use Room Alert 24E's built-in web server, bundled *Device Manager* software, or any SNMP application to monitor unlimited units across your network.
- Room Alert 24E allows real-time monitoring, advanced alerting by email/email-to-SMS/SNMP & more, Fahrenheit/Celsius, high/low watermarks, logging/graphing software & much more.
- Use Room Alert 24E with or without a host system. That's right... *No PC Required!*



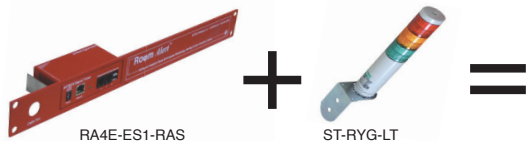
RA24E-TH1-RAS

INCLUDES: Room Alert 24E Rack Unit (1U 19"), built-in Digital Temperature Sensor, built-in Digital Humidity Sensor, external Main Power Sensor, external Digital Temperature Sensor, external Room Entry Sensor, 6 external Digital Sensor Ports (RJ-11), 16 Switch Sensor Channels, Factory Reset Button, LED Sensor Status Indicators, Ethernet Connection (RJ-45), Expansion Port (RJ-45), 10' Ethernet cable, 2 5V Power Adapters (110/240V, RoHS), built-in web server, SNMP Trap & Query enabled, bundled *Device Manager* software license, CD installation & resource media, printed *Room Alert 24E User's Guide & Reference Manual*, 12 months of Maintenance Support & Update Service (MSUS), '30-Day Satisfaction Guarantee' and special offers on other products. Additional sensors & optional software plugin packages are available.

Signal Tower w/Audio Rack Mount (RASTAXR)



- Signal Tower w/Audio Rack includes all of the same features as the Room Alert 4ER, with the addition of an included mounting bracket, External Tower Light w/Audio and Tower Light connection cable.
- Signal Tower lights turn on/off when alarms are detected (i.e. pings fail, high temps, etc.).
- Turn Signal Tower lights on/off via SNMP Traps, Modbus, URL, API, web page, etc.
- Two selectable single-tone, intermittent alarms with adjustable volume to 85dB (at 1m).



RASTAXR-RYG-RAS

INCLUDES: Room Alert 4E ID Box in Rack Unit (1U 19"), 1 external Digital Temperature Sensor, 2 Digital Sensor Ports (RJ-11), 1 Switch Sensor Channel, Factory Reset Button, Ethernet Connection (RJ-45), Light Tower Expansion Port, Signal Tower Light w/Audio, 3' Light Cable, 10' Ethernet cable, 5V Power Adapter (110/240V, RoHS), wall mount brackets, built-in web server, SNMP Trap & Query enabled, bundled *Device Manager* software license, CD installation & resource media, printed *Room Alert Signal Tower User's Guide & Reference Manual*, 12 months of Maintenance Support & Update Service (MSUS), '30-Day Satisfaction Guarantee' and special offers on other products. Additional sensors & optional software plugin packages are available.

Room Alert 11E Rack Mount (RA11ER)



- Built-in Digital Temperature Sensor & Factory Reset Button.
- Allows 1-2 external Digital Temperature or Digital Temperature/Humidity Sensors for use up to 100' from Room Alert 11ER.
- Includes Main Power Sensor, external Digital Temperature/Humidity Sensor, 2 Digital Sensor Ports, 8 Switch Sensor Channels & Rack Mount Bracket.
- Use Room Alert 11ER's built-in web server, bundled Device *ManageR* software, or any SNMP application to monitor unlimited units across your network.
- Room Alert 11ER allows real-time monitoring, advanced alerting by email/email-to-SMS/SNMP & more, Fahrenheit/Celsius, high/low watermarks, logging/graphing software & much more.
- Use Room Alert 11ER with or without a host system. That's right... No PC Required!



RA11E-TH1-RAS

INCLUDES: Room Alert 11E ID Box in Rack Unit (1U 19"), 1 built-in Digital Temperature Sensor, 1 external Digital Temperature/Humidity Sensor, 1 external Main Power Sensor, 2 Digital Sensor Ports (RJ-11), 8 Switch Sensor Channels, Ethernet Connection (RJ-45), 10' Ethernet cable, 2.5V Power Adapters (110/240V, RoHS), built-in web server, SNMP Trap & Query enabled, bundled Device ManageR software license, CD installation & resource media, printed *Room Alert 11E User's Guide & Reference Manual*, 12 months of Maintenance Support & Update Service (MSUS), '30-Day Satisfaction Guarantee' and special offers on other products. Additional sensors & optional software plugin packages are available.

Room Alert 11E (RA11E)



- Built-in Digital Temperature Sensor & Factory Reset Button.
- Allows 1-2 external Digital Temperature or Digital Temperature/Humidity Sensors for use up to 100' from Room Alert 11E.
- Includes Main Power Sensor, external Digital Temperature/Humidity Sensor, 2 Digital Sensor Ports & 8 Switch Sensor Channels.
- Use Room Alert 11E's built-in web server, bundled Device *ManageR* software, or any SNMP application to monitor unlimited units across your network.
- Room Alert 11E allows real-time monitoring, advanced alerting by email/email-to-SMS/SNMP & more, Fahrenheit/Celsius, high/low watermarks, logging/graphing software & much more.
- Use Room Alert 11E with or without a host system. That's right... No PC Required!



RA11E-TH1-BAS

INCLUDES: Room Alert 11E ID Box, 1 built-in Digital Temperature Sensor, 1 external Digital Temperature/Humidity Sensor, 1 external Main Power Sensor, 2 Digital Sensor Ports (RJ-11), 8 Switch Sensor Channels, Ethernet Connection (RJ-45), 10' Ethernet cable, 2.5V Power Adapters (110/240V, RoHS), built-in web server, SNMP Trap & Query enabled, bundled Device ManageR software license, CD installation & resource media, printed *Room Alert 11E User's Guide & Reference Manual*, 12 months of Maintenance Support & Update Service (MSUS), '30-Day Satisfaction Guarantee' and special offers on other products. Rack mount bracket, additional sensors & optional software plugin packages are available.

Signal Tower Combo Rack Mount (RASTXR)



- Room Alert Signal Tower Combo includes all of the same features as the Room Alert 4ER, with the addition of an included mounting bracket, external tower light and tower light connection cable.
- Signal Tower lights turn on/off when alarms are detected (i.e. pings fail, high temps, etc.).
- Turn Signal Tower lights on/off via SNMP Traps, Modbus, URL, API, etc.



RASTX-2RG-RAS

INCLUDES: Room Alert 4E ID Box in Rack Unit (1U 19"), 1 external Digital Temperature Sensor, 2 Digital Sensor Ports (RJ-11), 1 Switch Sensor Channel, Factory Reset Button, Ethernet Connection (RJ-45), Light Tower Expansion Port, Signal Tower Light, 3' Light Cable, 10' Ethernet cable, 5V Power Adapter (110/240V, RoHS), wall mount brackets, built-in web server, SNMP Trap & Query enabled, bundled Device ManageR software license, CD installation & resource media, printed *Room Alert Signal Tower User's Guide & Reference Manual*, 12 months of Maintenance Support & Update Service (MSUS), '30-Day Satisfaction Guarantee' and special offers on other products. Additional sensors & optional software plugin packages are available.

Room Alert 4E Rack Mount (RA4ER)



- Built-in Digital Temperature Sensor, Factory Reset Button & Light Tower Expansion Port.
- Allows 1-2 external Digital Temperature or Digital Temperature/Humidity Sensors for use up to 100' from Room Alert 4ER.
- Includes 1 external Digital Temperature Sensor, 2 Digital Sensor Ports, 1 Switch Sensor Channel & Rack Mount Bracket.
- Use Room Alert 4ER's built-in web server, bundled Device *ManageR* software, or any SNMP application to monitor unlimited units across your network.
- Room Alert 4ER allows real-time monitoring, advanced alerting by email/email-to-SMS/SNMP & more, Fahrenheit/Celsius, high/low watermarks, logging/graphing software & much more.
- Use Room Alert 4ER with or without a host system. That's right... No PC Required!



RA4E-ES1-RAS

INCLUDES: Room Alert 4E ID Box in Rack Unit (1U 19"), 1 external Digital Temperature Sensor, 2 Digital Sensor Ports (RJ-11), 1 Switch Sensor Channel, Factory Reset Button, Ethernet Connection (RJ-45), Light Tower Expansion Port, 10' Ethernet cable, 5V Power Adapter (110/240V, RoHS), built-in web server, SNMP Trap & Query enabled, bundled Device *ManageR* software license, CD installation & resource media, printed *Room Alert 4E User's Guide & Reference Manual*, 12 months of Maintenance Support & Update Service (MSUS), '30-Day Satisfaction Guarantee' and special offers on other products. External light tower, additional sensors & optional software plugin packages are available.

Room Alert 4E (RA4E)



- Built-in Digital Temperature Sensor, Factory Reset Button & Light Tower Expansion Port.
- Allows 1-2 external Digital Temperature or Digital Temperature/Humidity Sensors for use up to 100' from Room Alert 4E.
- Includes 1 external Digital Temperature Sensor, 2 Digital Sensor Ports & 1 Switch Sensor Channel.
- Use Room Alert 4E's built-in web server, bundled Device *ManageR* software, or any SNMP application to monitor unlimited units across your network.
- Room Alert 4E allows real-time monitoring, advanced alerting by email/email-to-SMS/SNMP & more, Fahrenheit/Celsius, high/low watermarks, logging/graphing software & much more.
- Use Room Alert 4E with or without a host system. That's right... No PC Required!



RA4E-ES1-BAS

INCLUDES: Room Alert 4E ID Box, 1 external Digital Temperature Sensor, 2 Digital Sensor Ports (RJ-11), 1 Switch Sensor Channel, Factory Reset Button, Ethernet Connection (RJ-45), Light Tower Expansion Port, 10' Ethernet cable, 5V Power Adapter (110/240V, RoHS), built-in web server, SNMP Trap & Query enabled, bundled Device *ManageR* software license, CD installation & resource media, printed *Room Alert 4E User's Guide & Reference Manual*, 12 months of Maintenance Support & Update Service (MSUS), '30-Day Satisfaction Guarantee' and special offers on other products. Rack mount bracket, external light tower, additional sensors & optional software plugin packages are available.

Most Popular Sensor Additions...

Digital Temperature Sensor



TMP-SDT-SEN

- Real-time temperature sensor.
- Temperature range: -67 – 257° F, -55 – 125° C.
- Max sensor cable distance up to 100'.
- Compatible with Room Alert 32W, 32E, 26W, 26WO, 24E, 11E, 7E, 4E, Signal Towers, TemPageR, WiSH & WiSPR.

INCLUDES: Digital Temperature Sensor with 25' RJ-11 cable & installation note.

Digital Temp / Humidity Sensor



RMA-DTH-SEN

- Real-time temperature & humidity sensor.
- Temperature range: -67 – 257° F, -55 – 125° C.
- Relative humidity range: 0 to 100%.
- Max sensor cable distance up to 100'.
- Compatible with Room Alert 32W, 32E, 26W, 26WO, 24E, 11E, 4E, Signal Towers, WiSH & WiSPR.

INCLUDES: Digital Temperature / Humidity Sensor with 25' RJ-11 cable & installation note.

* Additional Sensors, Cameras & Accessories Available Online.

TemPageR 3E Rack Mount (TMP3ER)



- Includes built-in Digital Temperature Sensor, external Digital Temperature Sensor, Factory Reset Button & Rack Mount Bracket
- Allows 1-2 external Digital Temperature Sensors for use up to 100' from TemPageR 3ER.
- Use TemPageR's built-in web server, bundled Device *ManageR* software, or any SNMP application to monitor unlimited units across your network.
- TemPageR 3ER allows real-time monitoring, advanced alerting by email/email-to-SMS/SNMP & more, Fahrenheit/Celsius, high/low watermarks, logging/graphing software & much more.
- Use TemPageR 3ER with or without a host system. That's right... *No PC Required!*



TMP3-ES1-RAS

INCLUDES: TemPageR 3E ID Box in Rack Unit (1U 19"), 1 built-in Digital Temperature Sensor, 1 external Digital Temperature Sensor, 2 Digital Sensor Ports, Factory Reset Button, Ethernet connection, 10' Ethernet cable, 5V Power Adapter (110/240V, RoHS), built-in web server, SNMP Trap & Query enabled, bundled Device ManageR software license, CD installation & resource media, printed *TemPageR 3E User's Guide & Reference Manual*, 12 months of Maintenance Support & Update Service (MSUS), '30-Day Satisfaction Guarantee' and special offers on other products. Additional sensors & optional software plugin packages are available.

TemPageR 3E (TMP3E)



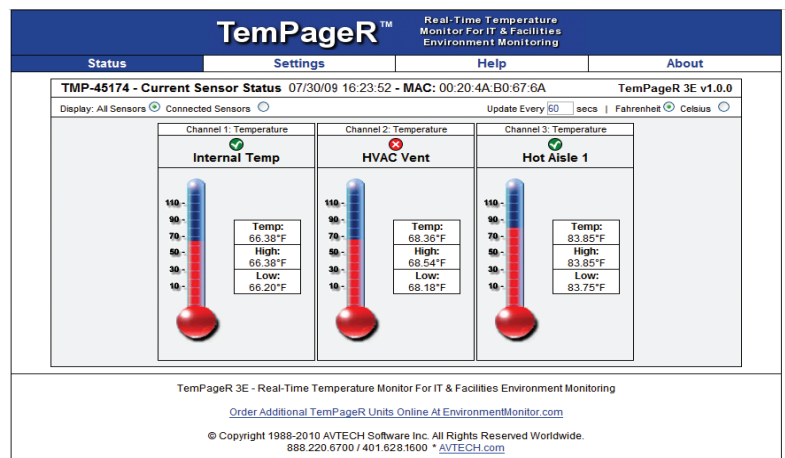
- Includes built-in Digital Temperature Sensor, external Digital Temperature Sensor & Factory Reset Button & Rack Mount Bracket.
- Allows 1-2 external Digital Temperature Sensors for use up to 100' from TemPageR 3E.
- Use TemPageR's built-in web server, bundled Device *ManageR* software, or any SNMP application to monitor unlimited units across your network.
- TemPageR 3E allows real-time monitoring, advanced alerting by email/email-to-SMS/SNMP & more, Fahrenheit/Celsius, high/low watermarks, logging/graphing software & much more.
- Use TemPageR 3E with or without a host system. That's right... *No PC Required!*



TMP3-ES1-BAS

INCLUDES: TemPageR 3E ID Box, 1 built-in Digital Temperature Sensor, 1 external Digital Temperature Sensor, 2 Digital Sensor Ports, Factory Reset Button, Ethernet connection, 10' Ethernet cable, 5V Power Adapter (110/240V, RoHS), built-in web server, SNMP Trap & Query enabled, bundled Device ManageR software license, CD installation & resource media, printed *TemPageR 3E User's Guide & Reference Manual*, 12 months of Maintenance Support & Update Service (MSUS), '30-Day Satisfaction Guarantee' and special offers on other products. Rack mount bracket, additional sensors & optional software plugin packages are available.

TemPageR is perfect for widely dispersed monitoring of temperature, especially when cost is a concern. TemPageR is the most widely installed product of its type and sells like popcorn at the movies. Perfect for small telecom rooms, monitoring every rack in your data center with multiple sensors and when a large deployment is desired. When you need a highly reliable solution on a budget, TemPageR is absolutely the best. Also included is a license for AVTECH's powerful Device ManageR software for network-wide monitoring. TemPageR 3E allows for 3 digital sensors (temperature only). **TemPageR is the most popular product worldwide for monitoring temperature in computer rooms and data centers.**



Sample TemPageR 3E/ER web browser interface. **This model allows use of up to 3 temperature sensors.** Advanced monitoring features are available by using AVTECH's Device ManageR software, included FREE. Customize your use with 'Plugins' for special functions.

What Are Digital vs Switch Sensors?

Digital Sensors are those that monitor in real-time to provide digital values that can be viewed through a web or application interface, passed in alert notifications or logged for creating charts and graphs. Common digital sensors include temperature, humidity and power.

Switch Sensors are those that do not provide real-time values and instead present their status as a condition of being in or out of a specific state. These sensors have a built-in switch or circuit that changes status as a threshold is passed, indicating an alarm condition.

BEST SELLER

Digital Temperature Sensor



TMP-SDT-SEN

- Real-time temperature sensor.
- Temperature range: -67 – 257° F, -55 – 125° C.
- Max sensor cable distance up to 100', includes 25'.
- Compatible with Room Alert 32W, 32E, 26W, 26WO, 24E, 11E, 7E, 4E, Signal Towers, TemPageR, WiSH & WiSPR.

INCLUDES: Digital Temperature Sensor with 25' RJ-11 cable & installation note.

Digital Outdoor Temperature Sensor

NEW



TMP-DOT-SEN

- Real-time temperature sensor.
- Temperature range: -67 – 257° F, -55 – 125° C.
- Max sensor cable distance up to 100', includes 25'.
- Silicon coating offers extra resilience for monitoring outdoors or in other harsh environments.
- Compatible with Room Alert 32W, 32E, 26W, 26WO, 24E, 11E, 7E, 4E, Signal Towers, TemPageR, WiSH & WiSPR.

INCLUDES: Digital Outdoor Temperature Sensor with 25' RJ-11 cable & installation note.

Digital Fluid Temperature Sensor

NEW



RMA-DFT-SEN

- Real-time fluid temperature sensor.
- Temperature range: -67 – 257° F, -55 – 125° C.
- Perfect for cooler or freezer monitoring of food, medicines & fluid temperature.
- Max sensor cable distance up to 100', includes 25'.
- Compatible with Room Alert 32W, 32E, 26W, 26WO, 24E, 11E, 7E, 4E, Signal Towers, TemPageR, WiSH & WiSPR.

INCLUDES: Digital Fluid Temperature Sensor with 30" RJ-11 cable & installation note.

Digital Temp / Humidity Sensor



RMA-DTH-SEN

- Real-time temperature & humidity sensor.
- Temperature range: -67 – 257° F, -55 – 125° C.
- Relative humidity range: 0 to 100%.
- Max sensor cable distance up to 100', includes 25'.
- Compatible with Room Alert 32W, 32E, 26W, 26WO, 24E, 11E, 4E, Signal Towers, WiSH & WiSPR.

INCLUDES: Digital Power Sensor with 25' RJ-11 cable, 6' power cord & installation note.

Smoke Sensor w/Escape Light



RMA-SS1-SEN

- Real-time recognition of smoke/fire.
- Audible alert and 'escape' light is triggered when sensor is activated due to smoke or fire.
- Powered by 9V Alkaline battery (included).
- Max sensor cable distance up to 900', includes 25'.
- Compatible with Room Alert 32W, 32E, 26W, 26WO, 24E, 11E, 7E, 4E, Signal Towers, WiSH & WiSPR.

INCLUDES: Smoke Sensor with 25' cable, 9V Alkaline battery, mounting screws, audible alert, escape light & installation note.

Main Power Sensor



RMA-PS1-SEN

- Real-time main power on/off status.
- Specially designed to interface with Room Alert.
- Monitors main, UPS or single phase power.
- Max sensor cable distance up to 900', includes 25'.
- Compatible with Room Alert 32W, 32E, 26W, 26WO, 24E, 11E, 7E, 4E, Signal Towers, WiSH & WiSPR.

INCLUDES: Main Power Sensor with 25' cable, 5V power adapter & installation note.

Mini UPS & Power Sensor (MUPS)



RMA-MUPS-SEN


- Real-time detection of loss of main power.
- Provides battery backup power for 15 minutes or more for any 5V device.
- Max sensor cable distance up to 900', includes 25'.
- Plugs in-line with AVTECH's 5V Power Adapter.
- Compatible with Room Alert 32W, 32E, 26W, 26WO, 24E, 11E, 7E, 4E, Signal Towers, WiSH & WiSPR.

INCLUDES: MUPS Sensor with 25' cable & installation note.

* Additional Sensors, Cameras & Accessories Available Online.

BEST SELLER

Flood Sensor w/8' Cable




- Real-time recognition of water/flood anywhere along the length of cable.
- 8' Flood Cable with 25' RJ-11 leader cable.
- Alert triggered when sensor is activated or power lost.
- Flood cable can be extended by 8' lengths.
- Compatible with Room Alert 32W, 32E, 26W, 26WO, 24E, 11E, 7E, 4E, Signal Towers, WiSH & WiSPR.

RMA-F008-SEN

INCLUDES: Flood Sensor with 8' Flood Cable and 25' RJ-11 leader cable, 25' sensor cable, 5V power adapter & installation note.

8' Flood Cable w/Leader




- Real-time recognition of water/flood anywhere along the length of cable.
- Flood cable can be extended by 8' lengths.
- Requires connection to Room Alert 26W or 26WO's built-in flood sensor port or to an AVTECH Flood Sensor (if previous cable is being replaced).

RMA-008FC-SEN

INCLUDES: 8' Flood Cable, 25' RJ-11 leader cable & installation note.

Flood Sensor w/24' Cable




- Real-time recognition of water/flood anywhere along the length of cable.
- 24' Flood Cable with 25' RJ-11 leader cable.
- Alert triggered when sensor is activated or power lost.
- Flood cable can be extended by 8' lengths.
- Compatible with Room Alert 32W, 32E, 26W, 26WO, 24E, 11E, 7E, 4E, Signal Towers, WiSH & WiSPR.

RMA-F024-SEN

INCLUDES: Flood Sensor with 8' Flood Cable and 25' RJ-11 leader cable, 25' sensor cable, 5V power adapter & installation note.

24' Flood Cable w/Leader




- Real-time recognition of water/flood anywhere along the length of cable.
- Flood cable can be extended by 8' lengths.
- Requires connection to Room Alert 26W or 26WO's built-in flood sensor port or to an AVTECH Flood Sensor (if previous cable is being replaced).

RMA-024FC-SEN

INCLUDES: 24' Flood Cable, 25' RJ-11 leader cable & installation note.

Flood Sensor (Spot)




- Real-time recognition of flood/water under pod.
- Specially designed to interface with Room Alert.
- Powered by 9V Alkaline battery (included).
- Max sensor cable distance up to 900', includes 25'.
- Compatible with Room Alert 32W, 32E, 26W, 26WO, 24E, 11E, 7E, 4E, Signal Towers, WiSH & WiSPR.

RMA-FS2-SEN

INCLUDES: Flood Sensor (Spot) with 25' cable, 9V Alkaline battery & installation note.

Room Entry Sensor




- Real-time recognition of door/cabinet opened/closed.
- Standard use on door or window and adjoining frame.
- Max sensor cable distance up to 900', includes 25'.
- Compatible with Room Alert 32W, 32E, 26W, 26WO, 24E, 11E, 7E, 4E & Signal Towers.

RMA-RE1-SEN

INCLUDES: Room Entry Sensor with 25' cable & installation note.

LIMITED SUPPLY

Air Flow Sensor (NC)




- Real-time recognition of air flow stop/start.
- 'Normally Closed' (NC) sensor status.
- Use in HVAC duct, under raised floors, near fan.
- Instant 'Plug & Play' switch sensor, normally closed.
- Max sensor cable distance up to 900', includes 25'.
- Compatible with Room Alert 32W, 32E, 26W, 26WO, 24E, 11E, 7E, 4E, Signal Towers, WiSH & WiSPR.

RMA-AF1-SEN

INCLUDES: Air Flow Sensor (Normally Closed) with 25' cable & installation note.

LIMITED SUPPLY

Air Flow 2 Sensor (NO)



- Real-time recognition of air flow stop/start.
- 'Normally Open' (NO) sensor status.
- Use in HVAC duct, under raised floors, near fan.
- Instant 'Plug & Play' switch sensor, normally closed.
- Max sensor cable distance up to 900', includes 25'.
- Compatible with Room Alert 32W, 32E, 26W, 26WO, 24E, 11E, 7E, 4E, Signal Towers, WiSH & WiSPR.

RMA-AF2-SEN

INCLUDES: Air Flow Sensor (Normally Open) with 25' cable & installation note.

* Additional Sensors, Cameras & Accessories Available Online.

Motion Sensor

NEW



RMA-MOT2-SEN

- Detect motion up to approximately 35' with 84° angle.
- Alert triggered when sensor is activated.
- Powered by 12V power adapter (included).
- Max sensor cable distance up to 900', includes 25'.
- Compatible with Room Alert 32W, 32E, 26W, 26WO, 24E, 11E, 7E, 4E, Signal Towers, WiSH & WiSPR.

INCLUDES: Motion Sensor with 25' cable, 12V DC Power Supply, mounting screws & installation note.

Panic Button 1

INDUSTRY GRADE



RMA-PB1-SEN

- Designed to be used as an emergency alarm to provide warning where someone is working and may need help or conditions reach an alarming state.
- Palm or foot size, locks in place, pull to release.
- NEMA rated for weather.
- Compatible with Room Alert 32W, 32E, 26W, 26WO, 24E, 11E, 7E, 4E, Signal Towers, WiSH & WiSPR.

INCLUDES: Panic Button 1 with 25' cable & installation note.

Relay (Low Voltage) **

NEW



RMA-RELAY-SEN

- Allows low voltage devices to be turned on/off.
- Three (3) device relays with visible relay status lights.
- One (1) general alarm relay for connection to alarm panel/box.
- Each relay supplies 3A at 125VAC or 1A at 24VAC.
- Compatible with Room Alert 32W, 32E & 4E only.

INCLUDES: Relay Sensor with 25' cable, 10' Light Extension cable & installation note.

Sound, Light & Entry (SLE)



RMA-SLE-SEN

- Real-time recognition of sound, light and/or entry.
- Includes external Room Entry Sensor.
- Specially designed to interface with Room Alert.
- Max sensor cable distance up to 900', includes 25'.
- Compatible with Room Alert 32W, 32E, 26W, 26WO, 24E, 11E & 7E.

INCLUDES: SLE Sensor with 25' cable, Room Entry Sensor, 5V power adapter & installation note.

Signal Tower Light **



ST-2RG-LT

- Signal Tower Lights turn on when alarms are detected (i.e. pings fail, high temps, etc.).
- Signal Tower Lights turn on/off via SNMP traps, Modbus, URL, API, etc.
- Includes 3' Light Cable; 10' Extension Cable available.
- Compatible with Room Alert 32W, 32E & 4E only.

INCLUDES: Signal Tower Light, Red & Green Signal Lights, 3' Light Cable & installation note.

Signal Tower Light w/Audio **

BEST VALUE



ST-RYG-LT

- Signal Tower Lights turn on when alarms are detected (i.e. pings fail, high temps, etc.).
- Signal Tower Lights turn on/off via SNMP traps, Modbus, URL, API, etc.
- Two selectable single-tone, intermittent alarms with adjustable volume to 85dB (at 1m).
- Includes 3' Light Cable; 10' Extension Cable available.
- Compatible with Room Alert 32W, 32E & 4E only.

INCLUDES: Signal Tower Light w/ Audio, Red, Yellow & Green Signal Lights, 3' Light Cable & installation note.

Wireless Sensor Hub (Powered)



RA26W-PWSH-HUB

- Internal Digital Temperature Sensor.
- Temperature range: -67 – 257° F, -55 – 125° C.
- 2 digital ports, 1 switch sensor channel.
- Max wireless distance from Room Alert unit or WiSPR is 250' in ideal conditions.
- Max 15 WiSH / WiSPR per Room Alert unit.
- Compatible with Room Alert 32W & 26W only.

INCLUDES: Internal Digital Temperature Sensor, 2 Digital Sensor Ports, 1 Switch Sensor Port, 5V power adapter & installation note. Max range approximately 250'.

Wireless Sensor Hub & Power Relay



RA26W-WSPR-HUB

- Internal Digital Temperature Sensor.
- Temperature range: -67 – 257° F, -55 – 125° C.
- 2 digital ports, 1 switch sensor channel.
- Max wireless distance from Room Alert unit or WiSPR is 350' in ideal conditions.
- Max 15 WiSH / WiSPR per Room Alert unit.
- Compatible with Room Alert 32W & 26W only.

INCLUDES: Powered relay technology, internal Digital Temperature Sensor, 2 Digital Sensor Ports, 1 Switch Sensor Port, 5V power adapter & installation note. Max range approximately 350'.

* Additional Sensors, Cameras & Accessories Available Online.

** Use with Room Alert 32W and 32E. Requires Adapter.

How To Purchase AVTECH Products

AVTECH products are available for purchase around the world and used in 104 countries, on Antarctica and in space. You can purchase through your favorite reseller *, direct from AVTECH, or online through our store. When ordering from AVTECH, we are happy to accept your organization's purchase order (PO), as well as payment via credit card or wire transfer. All orders ship the same or next business day.

Resellers: Order Through Your Favorite Reseller – Ask them to contact AVTECH on your behalf. We can set them up to resell AVTECH products in minutes and ship to you the same or next business day.

Phone: 888.220.6700 / 401.628.1600 (9-5 EST) – Call AVTECH direct and ask to speak with a 'Product Specialist'. They can take your order by phone for immediate processing or provide you with an immediate PDF quote by email. If you are outside of the U.S.A. or Canada, please ask to speak with an 'International Product Specialist' as they can better address international shipping and customs concerns.

Website: EnvironmentMonitor.com (Anytime) – Place your order online at any time through the AVTECH store for immediate processing. International money rates are available online to view pricing and make payment in your local currency. Periodic online specials are available and change on a regular basis.

Email: Orders@AVTECH.com (Anytime) – Send your organization's purchase order (PO), completed and scanned quote form or order instructions to AVTECH via email. We prefer to receive POs in PDF format although can accept Word and Excel formats if necessary.

Fax: 401.628.1601 (Anytime) – Send your purchase order (PO), completed quote form or order instructions to AVTECH via fax at any time. Faxes are received in a secure facility.

NOTE: International orders placed with a purchase order ship when payment is received. Wire transfer or credit card payment is preferred. Checks must be in U.S.D. and drawn on a U.S. bank.

Maintenance Support & Update Service (MSUS)

'Maintenance Support & Update Service' (MSUS) for AVTECH's IT & facilities environment monitoring products is an important type of 'IT & facilities insurance'. If a problem arises, help is within easy and immediate access. This enables your organization to keep the servers, network and entire operation available and running for everyone's benefit. It also allows managers to sleep well at night, comfortable knowing that Room Alert, TemPageR and Device ManageR are on the job 24 hours a day!

During the 'Maintenance Support & Update Service' (MSUS) period, AVTECH will make available to current customers without charge, copies of any appropriate firmware, software updates and/or enhancements as may be released. Firmware and software updates will be provided via website download (approximately 3-4 times per year) and via CD links (normally mailed annually). Updates shall include release notes or revised documentation when it is or may be appropriate. In addition, AVTECH will provide technical support as may be required, new software keys, current product firmware, notice of new products and services, periodic newsletters or update communications and various special offers, which provide benefit to the licensed customer. Room Alert and TemPageR hardware customers will enjoy full hardware replacement service on the ID box in case it should fail to function properly during normal use (i.e. without tamper or damage). This valuable service insures that current firmware and software versions for products, documentation, as well as technical support and fully functioning hardware, are available to licensed customers during the MSUS period.

MSUS is an annual service that is included for free during the first year when any AVTECH monitoring product is purchased. MSUS is optionally extendable thereafter on an annual basis, paid for in advance. AVTECH automatically sends out renewal notices sixty (60) days prior to expiration of MSUS for easy renewal. Failure to renew this service will result in a loss of the valuable and important benefits listed above. Reinstatement after MSUS has expired will incur an additional service fee. Support for sensors is complimentary and based upon current MSUS for the primary Room Alert or TemPageR monitoring hardware being covered. For additional information, please contact AVTECH directly.

Technical Support services are available 9-5:00 EST through:

Live Chat: AVTECH.com/LiveChat.htm

Email: Support@AVTECH.com

Website: AVTECH.com/Support

Phone: 888.220.6700 / 401.628.1600

Contact Us

AVTECH Software, Inc.
16 Cutler Street, Cutler Mill
Warren, RI 02885-2761 USA

Sales: 888.220.6700
Phone: 401.628.1600
Fax: 401.628.1601

Visit Us

AVTECH.com
RoomAlert.com
TemPageR.com
EnvironmentMonitor.com

Trademarks

© Copyright 1988-2010
AVTECH Software, Inc.
All Rights Reserved Worldwide.
AVTECH, AVTECH Software,
AVTECH.com, AVTECHSoftware.com,
EnvironmentMonitor.com,
'Environment Monitoring Made Easy!'
'Network-Wide Monitoring Made Easy!'
Device ManageR, Room Alert,
RoomAlert.com, Signal Tower, SLE, WiSH,
WiSPR, TemPageR and TemPageR.com.

Privacy Promise

AVTECH does not sell or share your email or other contact information. AVTECH uses limited email marketing because most of our prospects and customers consider it important and convenient. When we do, AVTECH provides customers with an easy means to decline to receive further email notices.

Current Versions

To confirm your organization is running current software and firmware versions or to download these versions for any licensed AVTECH product under current MSUS, please visit www.AVTECH.com and look for the 'Current Versions' box on the "Support" page.

Tell Us Your Story

At AVTECH, we truly want to know when we do well and when we miss expectations. Working to provide the best products and services means making changes that typically succeed and occasionally fall short. Please take a moment and email us your feedback at Feedback@AVTECH.com. It is always appreciated. Thank You.

Protect Your IT Facility... *Don't Wait Until It's Too Late!*



What Will *You* Do When Disaster Strikes?

Quit Run Panic Cope Rejoice *

Right now, your data center is under attack! You might not believe it because things appear to be running smoothly. The network is up and bandwidth is not taxed. The servers are accessible and users aren't complaining. Everything appears to be under control. However... just beyond that wall, above those ceiling tiles, or under the raised floor is a disaster waiting to strike. Even worse, it has your name written all over it!

You see, no one really knows when or how a disaster will strike. We just know the potential is always there. So preparing for it is critical to minimizing its impact on computers, networks, users and the organization.

Computer Room Environment Monitoring Too Often Overlooked

Today's data centers are complex and handle an immense workload. This is because what happens there affects the entire organization, supporting hundreds or thousands of users. The most overlooked issue in data centers today remains 'environment monitoring'. This is true at least until a disaster strikes, then it becomes *Job 1*. Why would anyone wait for their own disaster?

What Is Environment Monitoring?

In the data center, computer and network equipment must be kept within a specific range of environmental conditions. If these get out of bounds, unpredictable and potentially catastrophic results can occur and cause data loss, hardware failure, denied access and downtime. Primary issues include:

- Temperature / Heat Index
- Main & UPS Power
- Flooding / Water
- Humidity
- Smoke / Fire
- Network & Security Camera
- Room Entry / Security
- Air Flow / Motion
- Dry Contacts / Switch Sensors

Air Conditioning Remains The Primary Cause Of Most Data Center Disasters

Failure of a primary or backup air conditioner is a major threat in all computer rooms, as temperatures will rise rapidly. Power drains can cause major damage to computers and equipment. Condensation overflow from air

conditioning or leaks from water pipes that support a system can cause flooding.

Main Power Sources Remain Unreliable, A UPS Is Simply Not Enough

Even in the 21st century, we still haven't harnessed electricity. Situations like over / under voltage, spikes, drops and blackouts haunt managers. Failure of backup power sources like generators or UPS systems with short run or expired batteries can make a bad situation even worse. Consider what happens when main power goes out and a UPS keeps CPUs alive while the air conditioning systems stay down. The end result is extreme temperatures in the computer room that will eventually cause severe hardware damage, data loss or possibly even start a fire.

- 61% of data centers say downtime is due to environment issues 1X+ in past 12 months
- 23% of data centers say downtime is due to environment issues 5X+ in past 12 months

Your Data Center & Job On The Line

If disaster strikes your data center, how will it impact business? How much will it cost? Who will get the blame? Could it have been prevented? Will management be asking for your head on a silver platter?

Downtime Costs More Than Money

When disasters strike, there are significant costs in areas that go far beyond the simple replacement of damaged hardware. Data can be lost and costs incurred to restore or recreate it; online operations lose sales & service opportunities... causing lost revenue both now and in the future; salaried employees continue to get paid even while systems are down and they can't work; overtime accrues for IT staff who work around the clock to get systems back online; and there will be other costs too.

- 59% of data centers say downtime lasts 1/2 day+
- 27% of data centers say downtime lasts 1-3 days
- 45% of downtime costs 10K per incident
- 11% of downtime costs 50K per incident

A Proactive Approach Is The Best Because Computers Don't Swim

The concept of knowing early and immediately about developing environment problems is easy for all prudent managers to understand. A business does not have to encounter a flood for

the IT staff to know that computers don't swim. The '5 Critical Steps' to successfully prevent an environment incident from causing your organization a catastrophic disaster include:

5 Steps To Prevent IT Environment Disaster

- 1) Install Monitors for Immediate Detection
- 2) Automated Alerting to Responsible IT Staff
- 3) Automatic Shutdown & Action Procedures
- 4) Fast and Appropriate Response by the Staff
- 5) Review, Analyze & Plan Future Prevention

Insurance And Recovery Plans Are Just 'Band Aids' After A Disaster

Insurance policies offer some financial relief from disasters by compensating for the cost of lost equipment. However, they never cover all of the extended costs (see above). Worse still is the impact on cash flow while you wait to be reimbursed. And who wants to fill out all those forms anyway? Then, in 6-12 months your insurance premiums go up. Ouch!

As for recovery plans, you need to (must) have one. Although, wouldn't you like to have one and never be forced to use it? Even the best recovery plans do not pay the costs. They provide a guideline as to how to get back in the game after a disaster. Wouldn't your management team rather avoid the experience altogether? Wouldn't you?

Why Put Your Business At Risk?

How much would it cost your business to lose access to primary servers or the network for just a 1/2 day? Ten, twenty, a hundred thousand dollars? A million dollars? It depends upon what you do although any loss is too much when it's your money. In today's online world, downtime for even a few minutes can mean life or death to sales opportunities or the entire business. Do you need to be in business continuously, like 24 x 365? Then stop running around with scissors in your hand.

Solutions Exist For Computer Rooms Of All Types And Sizes... Yours Too!

AVTECH has several powerful, scalable solutions for IT & facilities environment monitoring. All are easy to install & use, reliable and available in rack, wall or ceiling mount models. They come complete with easy to install hardware, cables, sensors, logging & graphing software, easy-to-use monitoring software, CD media & documentation, installation

notes, 12 months of *Maintenance Support & Update Service* (MSUS). Installation is easily completed within minutes.

TemPageR is designed for easy, advanced, temperature monitoring, alerting and more. Our **Room Alert** models offer the ability to monitor temperature, humidity, heat index, power, flood, smoke, cameras, dry contacts and much more. See the model comparison online for detailed information. All models offer a built-in web server & interface for standalone use (i.e. No PC required) and alerting. All models also include a bundled (*Free*) license for our powerful **Device Manager** for sensor management, logging, graphing, alerting and more. AVTECH also offers Plug-Ins for advanced alerting, automatic shutdown, corrective actions and more.

Who Uses These Monitoring Systems?

AVTECH products are used around the world by all types of organizations. Sample users include the White House, Pentagon, United Nations, all branches of the U.S. government, over 86% of the Fortune 1000 and businesses of all types & sizes. We think that your organization is just as important. Don't you agree?

Easy Ordering Anytime... Have Your Favorite Reseller Call Us Today

You can begin protecting your IT data center today by ordering online, calling us directly or having your favorite reseller call us to purchase on your behalf. Orders ship the same or next business day. If you would like to receive a free product catalog, simply call us or request it online.

Purchase Room Alert or TemPageR today, then when a disaster threatens your computer room or data center, you can *rejoice* in the knowledge that you helped to save your organization a bundle... maybe even its life.

Contact Your Favorite Reseller To Order!



* Rejoice when you use Room Alert & TemPageR to identify threatening conditions, immediately notify appropriate IT staff and then automatically take corrective actions... just as you planned. *Very Cool.*